


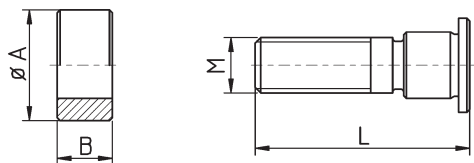
<i>Roller, Roller Bolts</i>		Rollen, Rollenbolzen	13.1
<i>Cam Disks</i>		Kurven, Kurvenscheiben	13.2
<i>Bar Stops</i>		Werkstoffanschläge	13.3
<i>Revolving Centers</i>		Mitlaufende Spitzen	13.4
<i>Screws, Springs</i>		Schrauben, Federn	13.5
<i>Edge Finders</i>		Kantentaster	13.6

Seite
 Page

- | | |
|------|--|
| 1 | Rollen, Rollenbolzen TRAUB
<i>Rollers, Roller Bolts TRAUB</i> |
| 2 | Rollen, Rollenbolzen INDEX
<i>Rollers, Roller Bolts INDEX</i> |
| 2 | Rollen, Rollenbolzen INDEX, Revolver
<i>Rollers, Roller Bolts INDEX, Revolver</i> |
| 3 | Rollen, Rollenbolzen INDEX (Steinhäuser)
<i>Rollers, Roller Bolts INDEX (Steinhäuser)</i> |
| 3 | Rollen, Rollenbolzen TORNOS, SAS
<i>Rollers, Roller Bolts TORNOS, SAS</i> |
| 4, 5 | Rollen / Rollenbolzen, divers
<i>Rollers, Roller Bolts, divers</i> |
| 5, 6 | Rollen, Rollenbolzen GILDEMEISTER + diverse
<i>Rollers, Roller Bolts GILDEMEISTER + diverse</i> |

Rollen, Rollenbolzen für TRAUB

Rollers, Roller Bolts for TRAUB



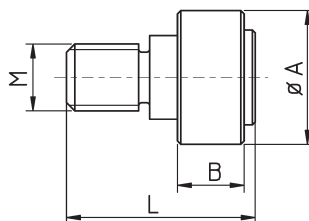
	Bestell-Nr. order-no.	A	M	L	B	Maschine machine	Orig. Ersatzteil-Nr. orig. spare part no.
Rolle - <i>roller</i>	U2010-TD	20			8	TRAUB TD16 - 26 - 36	
Rollenbolzen - <i>roller bolt</i>	U2015-TD		ø10 *	27,5			
Rolle - <i>roller</i>	U2010-A	16			10	TRAUB A15 - 25	620.116
Rollenbolzen - <i>roller bolt</i>	U2015-AL		M10	38			620.117
Rollenbolzen - <i>roller bolt</i>	U2015-AK		M10	23,5			
Rolle - <i>roller</i>	U2010-TB	22			12	TRAUB TB 42-60	
Rollenbolzen - <i>roller bolt</i>	U2015-TB		M12	35			
Rolle - <i>roller</i>	U2010-TA	25			14	TRAUB A 36 - 42 - 60	623.602
Rollenbolzen - <i>roller bolt</i>	U2015-TA		M12	40			623.604

* = ohne Gewinde

* = without thread

Rollen, Rollenbolzen
für TRAUB mit Nadellager

Rollers, Roller Bolts
for TRAUB with Needle Bearings



	Bestell-Nr. order-no.	A	M	L	B	Maschine machine	Orig. Ersatzteil-Nr. orig. spare part no.
Rolle komplett - <i>roller complete</i>	UTRA-TD	20	ø10 *	27,5	8	TRAUB TD16 - 36	312.269
Rolle komplett - <i>roller complete</i>	UTRA-TB	22	M12	35	12	TRAUB TB 42 - 60	615.153
Rolle komplett - <i>roller complete</i>	UTRA-TA	25	M12	40	14	TRAUB A 36 - 60	
Rolle komplett - <i>roller complete</i>	UTRA-A	16	M10	23	10	TRAUB A 25 / TB42	615 427
Exzenterrolle incl. Zubehör <i>Eccentric roller incl. accessory</i>	UTRA-EXC	22	ø10*	38		TRAUB TK / TG	675658 675660

* = ohne Gewinde

* = without thread

13.1 - 2

Rollen, Rollenbolzen Roller, Roller Bolts

13

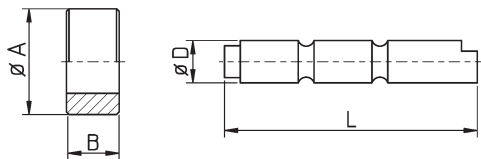
Allgemeines Zubehör für CNC- und kurvgesteuerte Drehautomaten
General Specific Parts for CNC- and Cam-Controlled Lathes

BRITSCH
Spannzeuge GmbH

Rollen, Rollenbolzen für INDEX

Rollers, Roller Bolts for INDEX

Segmentrollen
segment rolls



	Bestell-Nr. order-no.	A	D	L	B	Maschine machine	Orig. Ersatzteil-Nr. orig. spare part no.
Rollen - <i>rollers</i>	U2010-42	18	8		14	B30 B42 B60	A71502
	U2010-29	16	7		12	C19 C29	A51500
	U2010-18	14	6		12	12 18 25	A31500
Rollenbolzen - <i>roller bolt</i>	U2015-42		8	46		B30 B42 B60	A71472
	U2015-42Z		8	51			A71522
	U2015-29		7	40		C19 C29	A51470
	U2015-18		6	36		12 18 25	A31470
	U2015-18Z		6	42			A31520
Rolle - <i>rollers</i>	U2010-D12	14	6		8	OR ON DG12	
	U2010-DG	16	8	7,5	8	OR ON DG12	AA3030
Rollenbolzen - <i>roller bolt</i>	U2017-D12		6	22,4		OR ON DG12	AA2040
	U2015-D12		6	25		OR ON DG12	A78751
	U2015-D12Z		6	34		OR ON DG12	D17421

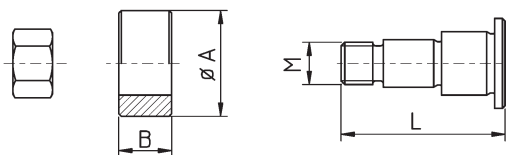
Rollen und Bolzen für Langdreheinrichtung

Rollers, Roller Bolts for Lathes

Rolle - <i>roller</i>	U2010-42L	18	8			INDEX B	B 72151
Bolzen - <i>bolt</i>	U2015-42L		8	26			

Revolver - Schaltrollen für INDEX

Revolver Sprockets for INDEX

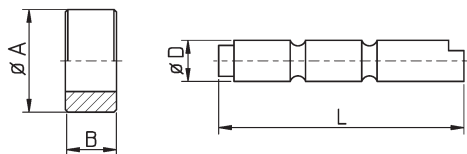


	Bestell-Nr. order-no.	A	M	L	B	Maschine machine	Orig. Ersatzteil-Nr. orig. spare part no.
Schaltrolle - <i>sprocket</i>	U2210-42	18			10	B30 B42 B60 C19 C29	A74741
	U2210-18	13			8	12 18 25	A34742
	U2210-OR	11			7	OR ON DG12	AA5350
Rollenbolzen - <i>roller bolt</i>	U2215-42		M8x075	31		B30 B42 B60 C19 C29	A74752
	U2215-18		M6x075	24		12 18 25	A34752
	U2215-OR		M6x075	23		OR ON DG12	AA5340

13

INDEX (STEINHÄUSER)

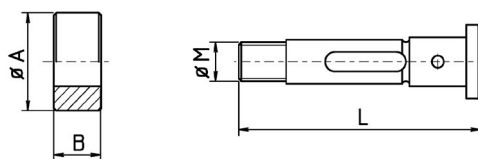
INDEX (STEINHÄUSER)



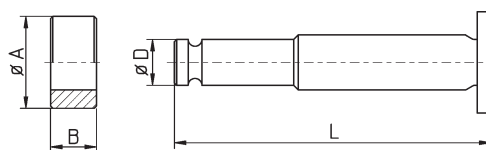
	Bestell-Nr. order-no.	A	D	L	B	Maschine machine	Orig. Ersatzteil-Nr. orig. spare part no.
Rolle - <i>roller</i>	U2010-S1	14	6	10	10	STEINHÄUSER StD	
Rolle - <i>roller</i>	U2010-S2	14	6	18	18		
Bolzen - <i>bolt</i>	U2015-S1		6	32			
Bolzen - <i>bolt</i>	U2015-S2		6	42			
Rolle - <i>roller</i>	U2010-MSG	25	8		15	INDEX MS25	M30101
Rolle - <i>roller</i>	U2010-MSK	16	8		8		AB9270
Bolzen - <i>bolt</i>	U2015-MS		8	52			M30103.10
Rolle - <i>roller</i>	U2010-KS	32	18			STEINHÄUSER KS	SK0308 0030
Bolzen - <i>bolt</i>	U2015-KS		18/23	43			SK0308 0040

Rollen, Rollenbolzen für TORNOS

Rollers, Roller Bolts for TORNOS



	Bestell-Nr. order-no.	A	B	L	M	Maschine machine	Orig. Ersatzteil-Nr. orig. spare part no.
Rolle - <i>roller</i>	U2010-SS	20	12			TORNOS AS/SAS	
Rollenachse - <i>roller axle</i>	U2015-SS			52	M8	TORNOS AS/SAS	



	Bestell-Nr. order-no.	A	D	L	B	Maschine machine	Orig. Ersatzteil-Nr. orig. spare part no.
Rolle - <i>roller</i>	U2010-TO	24			12	TORNOS AS/SAS	AS 1365
Rollenachse - <i>roller axle</i>	U2015-TO		10	68		TORNOS AS/SAS	AS 28299

13.1 - 4

Rollen, Rollenbolzen Roller, Roller Bolts

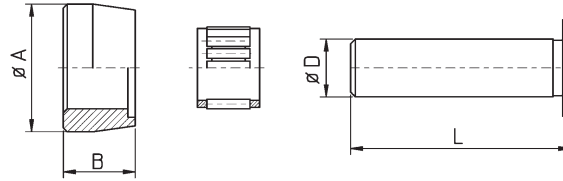
13

Allgemeines Zubehör für CNC- und kurvgesteuerte Drehautomaten
General Specific Parts for CNC- and Cam-Controlled Lathes

BRITSCH
Spannzeuge GmbH

Rollen, Rollenbolzen

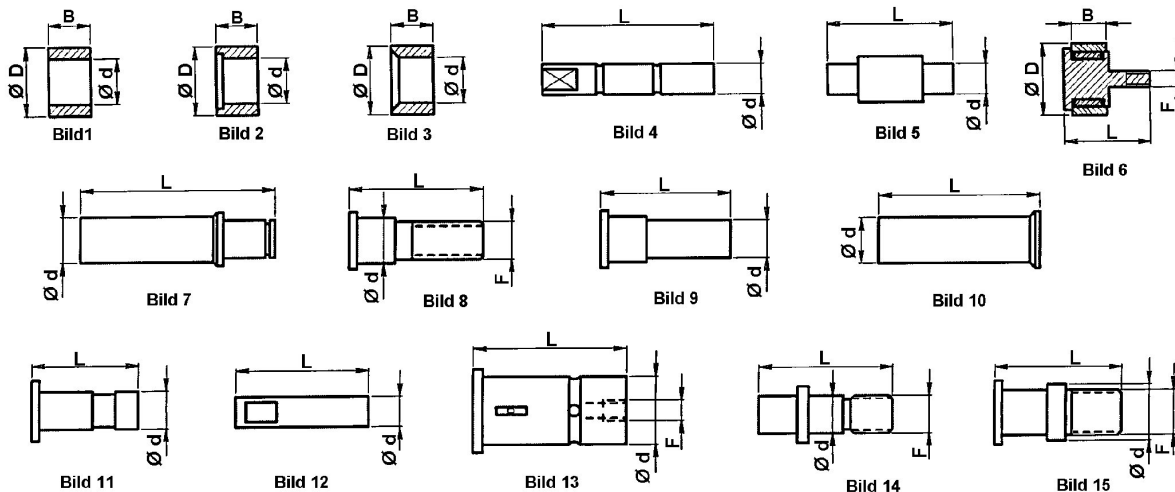
Rollers, Roller Bolts



	Bestell-Nr. order-no.	A	D	L	B	Maschine machine	Orig. Ersatzteil-Nr. orig. spare part no.
Rolle - <i>roller</i>	U2010-SAT	26,5			15	TORNOS AS14	
Rolle - <i>roller</i>	U2010-SA	26,5			15	TORNOS AS14	Original
Rollenbolzen - <i>roller bolt</i>	U2015-SAT		12	46		TORNOS AS14	
Nadellager	KBK121713					TORNOS AS14	
Rollenbolzen komplett <i>roller bolt complete</i>	U2010-SAS	26,5	12	40		TORNOS SAS 16	Original
Rolle - <i>roller</i>	U2011-SAS	26,5				SAS16	

Rollen und Bolzen

Rollers and Bolts



Bolzen - bolts					Rollen - rollers					Maschine machine	Best.-Nr. komplett order-no. complete
Bestell-Nr. order-no.	d	L	F	Bild	Bestell-Nr. order-no.	D	d	B	Bild		
V514.016	10	40		4	V514.016B	17	10	14	1	ATA 25-40	
V514.531	6,35	33		12	V514.532	12,8	6,35	9,2	1	BROWN E SHARPE	
V514.533	7	32		4	V514.534	14	7	11,7	1	BROWN E SHARPE	
V514.535	8	30,5		4	V514.536	14	8	11,7	1	BROWN E SHARPE	
V514.291	12	26	M10x1	8	V514.292	18	12	11	2	CASER 26-30	
V514.551	8	30		4	V514.147B1	18	8	12	1	DAR 46	
					V514.147B2	18	8	22	1	DAR 46	
					V514.147B3	16	8	10	1	DAR 46	
V514.941	8	46		4	V514.942	18	8	14	1	DAR 46	V514.940
V514.511	10	37,5	M10	14	V514.512	18	10	10	1	FEINLER 10-15	V514.510
					V514.513	16	8	8	1	FEINLER 10-15	

13

Rollen und Bolzen

Rollers and Bolts

Bolzen - bolts					Rollen - rollers					Maschine machine	Best.-Nr. komplett order-no. complete
Bestell-Nr. order-no.	d	L	F	Bild	Bestell-Nr. order-no.	D	d	B	Bild		
U2010-GKA	8	32		12	U2010-GA	20	8	10	1	GILDEMEISTER	
U2015-GA	8	45		12	U2010-GA	20	8	10	1	GILDEMEISTER	
U2015-GAS	10	33		9	U2010-GAS	25	12	10	2	GILDEMEISTER	
V514.475	15	48		11	V514.476	30	15	15	2	GILDEMEISTER	
V514.481	18	40	M5	13	V514.482	29,5	18	13	2	GILDEMEISTER	
V514.485	20	45	M6	13	V514.486	30	20	15	2	GILDEMEISTER	
					V514.487	42	25	22	2	GILDEMEISTER AS32	
V514.485	20	45	M6	15	V514.486	30	20	15	2	GILDEMEISTER	
V514.241	12	36	M10	8	V514.242	18	12	14	2	GIORGI 20-25-32	V514.240
V514.261	10	62		8	V514.262	16	10,5	12	1	GIORGI 20-25-32	
V514.101	12	52		7	U2010-A	16	12	10	1	SAIC B26	V514.100
V514.231	12	36	M10	8	V514.232	18	12	10	2	SAIC B26-30	V514.230
V514.251	10	37		9	V514.242	18	12	14	2	SAIC B26-30	V514.250
V514.211	12	23	M8	8	V514.212	18	12	12	2	SAIC A30	
		32	M8	6			19	11	6	SAIC A30	V514.220
					V514.SE25	47	25	13	1	SCHÜTTE SE25 (SE25 D859)	V514.SE25
V514.421	8	43		4	V514.422	18	8	18	1	TAREX 42-52	V514.420
V514.101	12	52		7	U2010-A	16	12	10	1	TRAUB A15-20-25	V514.100
U2015-AK	12	23	M10	8	U2010-A	16	12	10	1	TRAUB A15-20-25	V514.100
U2015-AL	12	36	M10	8	U2010-A	16	12	10	1	TRAUB A15-20-25	V514.120
V514.711	12	23	M10	15	U2010-A	16	12	10	1	TRAUB A15-20-25	UTRA-A
U2015-TD	10	28		11						TRAUB TD16-26-36	V514.010
U2015-TD	10	28		11	V514.012B	20	13	8	1	TRAUB TD16-26-36	UTRA-TD
V514.159		53	M16x1		Inkl. Kugellager / <i>incl. ball bearing</i>					TRAUB TB60	655.159
V514.021	8	33		5	VZ714.010	12	8	10	1	TRAUB TD16-26-36	
		28	M6x1	6			16	11	6	TRAUB TD16-26-36	V514.030
V514.601	14	52		7	U2010-A	16	12	10	1	TRAUB A36-42-60	V514.600
U2015-TA	15	40	M12	8	U2010-TA	25	15	14	2	TRAUB A36-42-60	V514.610
V514.711	12	23	M10	15	U2010-A	16	12	10	1	TRAUB TB30-42-60	UTRA-A
U2015-TB	15	34	M12	15	U2010-TB	22	15	11,7	2	TRAUB TB30-42-60	UTRA-TB
					V514.723	20	15	11,7	2	TRAUB TB30-42-60	
					V514.913	16	8	7,5	1	INDEX ON OR 12	
V514.811	18	45	M14	8	V.514.812	25	18	14	2	SAIC B45	V514.810

13.1 - 6

Rollen, Rollenbolzen Roller, Roller Bolts

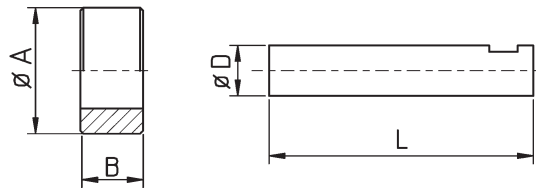
13

Allgemeines Zubehör für CNC- und kurvigesteuerte Drehautomaten
General Specific Parts for CNC- and Cam-Controlled Lathes

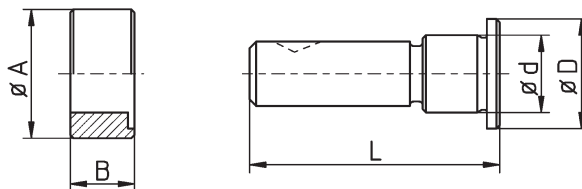
BRITSCH
Spannzeuge GmbH

Rollen, Rollenbolzen für
GILDEMEISTER Mehrspindeldrehautomaten

Rollers, Roller Bolts for
GILDEMEISTER Multi Spindle Lathes



	Bestell-Nr. order-no.	A	D	L	B	Orig. Ersatzteil-Nr. orig. spare part no.
Rolle - <i>roller</i>	U2010-GA	20	8		10	01.27.025
Rollenbolzen - <i>roller bolt</i>	U2015-GA		8	45		05.09.008
Rollenbolzen - <i>roller bolt</i>	U2015-GT		8	32		01.27.024



	Bestell-Nr. order-no.	A	B	L	D	d	Orig. Ersatzteil-Nr. orig. spare part no.
Rolle - <i>roller</i>	U2010-GAS	25	10				06.07.009
Rollenbolzen - <i>roller bolt</i>	U2015-GAS			33	16	12	06.07.010
Rollenbolzen - <i>roller bolt</i>	U2016-GAS			28,5	16	12	15.21.107

GILDEMEISTER GS35:

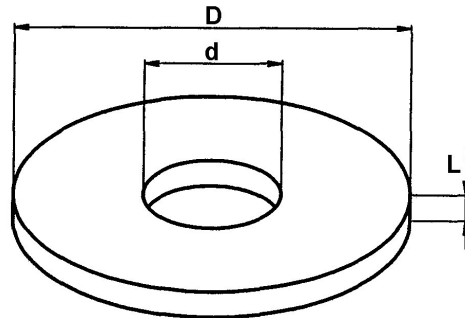
Rolle - <i>roller</i>	U2010-GS	29,5	18				703-09-0021-001
Rollenbolzen - <i>roller bolt</i>	U2015-GS			55	22	18	3703-21-0021

Seite
Page

- | | |
|------|---|
| 1 | Kurvenscheiben
<i>Cam Disks</i> |
| 2 | Glockenkurven
<i>Steel Tubes for Cams</i> |
| 3 | Kurven f. Stoppanschlag
<i>Bar Catch Cam Disks</i> |
| 3, 4 | Kurven f. Quer- und Senkrechtsupport
<i>Cam Disks for Crosswire and Vertical Slide</i> |
| 5 | Glockenkurven f. Langdreheinrichtung
<i>Cam Tubes for Lathes</i> |
| 5, 6 | Glockenkurven f. Gewindeschneidapparat
<i>Cam Tubes for Tapping Equipment</i> |
| 7 | Glockenkurven f. Bohrreitstock
<i>Cam Disks for Bore Tailstock Equipment</i> |
| 8 | Rückzugskurven
<i>Cam Tubes for Return</i> |
| 8 | Kurven f. Zangenspanneinrichtung
<i>Cam Tubes for Open-Close Collet Equipment</i> |
| 9 | Kurven für diverse Maschinen
<i>Cam Tubes and Disks for Different Machines</i> |

Kurvenscheiben Stahl

Cam Disks Steel Version



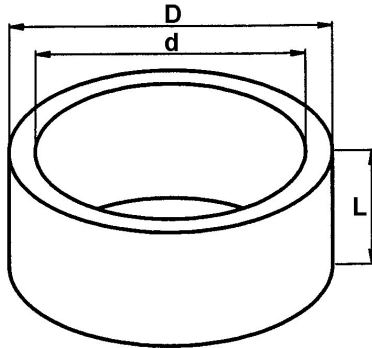
Bestell-Nr. order-no.	D	d	L
V400.0783010	78	30	10
V400.0804610	82	46	10
V400.0864610	86	46	10
V400.0883010	88	30	10
V400.0884610	88	46	10
V400.0893012	89	30	12
V400.0902008	90	20	8
V400.0903006	90	30	6
V400.0904510	90	45	10
V400.0923006	92	30	6
V400.0964012	98	40	12
V400.0964410	96	44	10
V400.0994012	99	40	12
V400.1002408	100	24	8
V400.1002410	100	24	10
V400.1002808	100	28	8
V400.1003010	100	30	10
V400.1063010	106	30	10
V400.1063012	106	30	12
V400.1102008	110	20	8
V400.1102606	110	26	6
V400.1102808	110	28	8
V400.1103208	110	32	8
V400.1104206	110	42	6
V400.1104512	110	45	12
V400.1104612	110	46	12
V400.1153006	115	30	6
V400.1153010	115	30	10
V400.1185812	118	58	12
V400.1202008	120	20	8
V400.1202410	120	24	10
V400.1202610	120	26	10

Bestell-Nr. order-no.	D	d	L
V400.1202808	120	28	8
V400.1203006	120	30	6
V400.1203007	120	30	7
V400.1203208	120	32	8
V400.1204010	120	40	10
V400.1236412	123	64	12
V400.1243208	124	32	8
V400.1244208	124	42	8
V400.1252008	125	20	8
V400.1252608	125	26	8
V400.1252808	125	28	8
V400.1253208	125	32	8
V400.1254208	125	42	8
V400.1302008	130	20	8
V400.1303006	130	30	6
V400.1303208	130	32	8
V400.1304008	130	40	8
V400.1304208	130	42	8
V400.1304512	130	45	12
V400.1402008	140	20	8
V400.1402410	140	24	10
V400.1402610	140	26	10
V400.1402808	140	28	8
V400.1403008	140	30	8
V400.1403208	140	32	8
V400.1403608	140	36	8
V400.1404010	140	40	10
V400.1404508	140	45	8
V400.1405010	140	50	10
V400.1503608	150	36	8
V400.1504010	150	40	10
V400.1505010	150	50	10

Bestell-Nr. order-no.	D	d	L
V400.1562808	156	28	8
V400.1584810	158	48	10
V400.1585810	158	58	10
V400.1602008	160	20	8
V400.1602408	160	24	8
V400.1602410	160	24	10
V400.1602610	160	26	10
V400.1602808	160	28	8
V400.1603006	160	30	6
V400.1603208	160	32	8
V400.1604010	160	40	10
V400.1604512	160	45	12
V400.1663208	166	32	8
V400.1703510	170	35	10
V400.1704010	170	40	10
V400.1753510	175	35	10
V400.1802008	180	20	8
V400.1803208	180	32	8
V400.1804010	180	40	10
V400.1904010	190	40	10
V400.2002008	200	20	8
V400.2002410	200	24	10
V400.2002610	200	26	10
V400.2003010	200	30	10
V400.2003208	200	32	8
V400.2003608	200	36	8
V400.2004010	200	40	10
V400.2102410	210	24	10
V400.2202010	220	20	10
V400.2202410	220	24	10
V400.2202610	220	26	10
V400.2203208	220	32	8
V400.2204010	220	40	10
V400.2402010	240	20	10
V400.2404010	240	40	10
V400.2502610	250	26	10
V400.2504010	250	40	10
V400.2602810	260	28	10
V400.2602812	260	28	12
V400.2604010	260	40	10
V400.2704010	270	40	10
V400.2804010	280	40	10
V400.3004010	300	40	10

Glockenkurven Stahl

Steel Tubes for Cams



Bestell-Nr. order-no.	L	D	d	Maschine machine	Funktion function				
V402.040	40	80	60	TRAUB A15-20-25 SAIC B26-30 A30	Drehen <i>turning</i>				
V402.050	50								
V402.060	60								
V402.070	70								
V402.080	80								
V402.090	90								
V402.090	90			CASER 26					
<hr/>									
V403.050	50	99	78	CASER 26-30 MERLI 26	Reitstock <i>tailstock</i>				
V403.060	60								
V403.070	70								
V403.075	75								
V403.080	80				Gew.schneid- apparat <i>tapping unit</i>				
<hr/>									
V404.030	30	108	84	SAIC B26-30 SAIC A30 ITS26	Gew.schneid- apparat <i>tapping unit</i>				
V404.040	40								
V404.050	50								
V404.060	60								
V404.070	70								
V404.080	80								
V404.090	90								
V404.100	100								
<hr/>									
V405.025	25					104	80	GIORGI GM20-25-32	Gew.schneid- apparat <i>tapping unit</i>
V405.035	35								
V405.040	40								
V405.050	50								
V405.060	60								
V405.070	70								
V405.080	80								
V405.090	90								

Bestell-Nr. order-no.	L	D	d	Maschine machine	Funktion function				
V406.040	40	108	88	GIORGI 20-25-32 SAIC B26-30 / A30 ITS26	Reitstock <i>tailstock</i>				
V406.050	50								
V406.060	60								
V406.070	70								
V406.080	80								
V406.090	90								
V406.100	100								
V406.120	120								
<hr/>									
V407.040	40	120	104	STROHM 150-125 Tornos R10	Dreispindel- apparat <i>3-spindle unit</i>				
V407.045	45								
V407.050	50								
V407.060	60								
V407.070	70								
V407.080	80								
<hr/>									
V408.040	40	115	95	TRAUB A15-20-25 TRAUB A36-42-60	Gew.schneid- apparat <i>tapping unit</i>				
V408.050	50								
V408.060	60								
V408.070	70								
V408.080	80								
V408.090	90								
V408.100	100								
V408.110	110								
V408.120	120								
<hr/>									
V410.040	40					130	110	TRAUB TD 16-26-36	Reitstock <i>tailstock</i>
V410.050	50								
V410.060	60								
V410.070	70								
V410.080	80								
V410.090	90								
V410.100	100								
V410.110	110								
V410.120	120								
V410.130	130								
V410.140	140								
<hr/>									
V412.050	50	150	25	TRAUB A42-60 TRAUB TB42-60 SAIC B45 ITS 36-42-60	Reitstock <i>tailstock</i>				
V412.060	60								
V412.070	70								
V412.080	80								
V412.090	90								
V412.100	100								
V412.110	110								
V412.120	120								
V412.130	130								
V412.140	140								
V412.150	150								

Kurven für Stoppanschlag gehärtet

Bar Catch Cam Disks Hardened

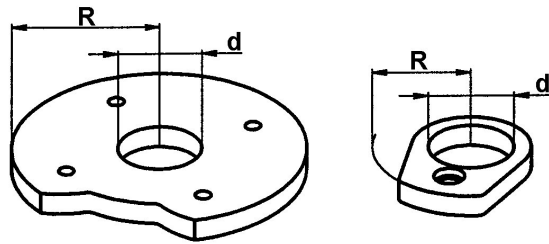


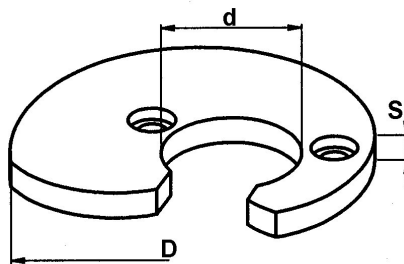
Bild 2

Bild 1

Bestell-Nr. order-no.	Winkel angle	R	d	Bild	Maschine machine
V420.101	46°	36	30	1	TRAUB A15-15-20-25
V420.201	46°	36	30	1	SAIC/ITS / GIORGI 20-25-32
V420.601	42°	47	40	1	TRAUB A36-42-60
V420.701	48°	80	45	2	TRAUB TB30-42-60

**Kurven gehärtet
für Quer- und Senkrechtsupport**

**Cam Disks Hardened, for
Crosswire and Vertical Slide**



Bestell-Nr. order-no.	Winkel angle	Hub - stroke	D = 76 d = 30 S = 10	Maschine machine	Schlitten slide
V421.101	30°		0 1 2 3 4 5		
V421.101	60°		0 1 2 3 4 5 6 7 8		
V421.101	90°		0 1 2 3 4 5 6 7 8 9 10 11 12	TRAUB A15-20-25	Hor.
V421.101	120°		0 1 2 3 4 5 6 7 8 9 10 11 12 13 14 15 16	SAIC B26-30	Hor.
V421.101	150°		0 1 2 3 4 5 6 7 8 9 10 11 12 13 14 15 16	SAIC A26-30-32	Hor.-Vert
V421.101	180°		0 1 2 3 4 5 6 7 8 9 10 11 12 13 14 15 16	GIORGI 20-25-30-32	Hor.
V421.101	200°		0 1 2 3 4 5 6 7 8 9 10 11 12 13 14 15 16	ITS 26	Trav.
V421.101	220°		0 1 2 3 4 5 6 7 8 9 10 11 12 13 14 15 16 17 18 19 20	FEINLER FA10-15	Hor.-Vert
V421.101	240°		0 1 2 3 4 5 6 7 8 9 10 11 12 13 14 15 16 17 18 19 20	CASER 26-30	Hor.-Vert
V421.101	260°		0 2 4 6 8 10 12 14 16 18 20		

Bestell-Nr. order-no.	Winkel angle	Hub - stroke	D = 130 d = 45 S = 12	Maschine machine	Schlitten slide
V421.205	90°		0 1 2 4 5 6 8 10 12 14 15 16 18 20		
V421.205	120°		0 1 2 4 5 6 8 10 12 14 15 16 18 20 22		
V421.205	150°		0 1 2 4 5 6 8 10 12 14 15 16 18 20 22 24 25 26 28 30		
V421.205	180°		0 1 2 4 5 6 8 10 12 14 15 16 18 20 22 24 25 26 28 30 32	ITS 36-42-60	Hor.-Vert
V421.205	220°		0 1 2 4 5 6 8 10 12 14 15 16 18 20 22 24 25 26 28 30 32		

13.2 - 4

Kurven, Kurvenscheiben Cam Disks

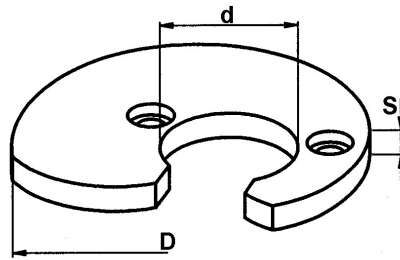
13

Allgemeines Zubehör für CNC- und kurvigesteuerte Drehautomaten
General Specific Parts for CNC- and Cam-Controlled Lathes

BRITSCH
Spannzeuge GmbH

Kurven gehärtet
für Quer- und Senkrechtsupport

Cam Disks Hardened, for
Crosswire and Vertical Slide



Bestell-Nr. order-no.	Winkel angle	Hub - stroke	D = 96 d = 40 S = 12	Maschine machine	Schlitten - slide
V421.601	60°		0 1 2 3 4 5 6 8		
V421.601	90°		0 1 2 3 4 5 6 8 10 12 14		
V421.601	120°		0 1 2 3 4 5 6 8 10 12 14 16 18	TRAUB A26	Hor.-Vert
V421.601	150°		0 2 4 6 8 10 12 14 16 18 20 22	TRAUB A36-42-60	Hor.
V421.601	180°		0 2 4 6 8 10 12 14 16 18 20 22 24 26	SAIC B45	Hor.
V421.601	220°		0 2 4 6 8 10 12 14 16 18 20 22 24 26	CASER 42-45-50	Hor.-Vert
V421.601	260°		0 2 4 6 8 10 12 14 16 18 20 22 24 26		

Bestell-Nr. order-no.	Winkel angle	Hub - stroke	D = 160 d = 45 S = 12	Maschine machine	Schlitten - slide
V421.701	90°		0 1 2 3 4 6 8 10 12 14 16 18 20		
V421.701	120°		0 1 2 3 4 6 8 10 12 14 16 18 20 22 24 26 28 30		
V421.701	150°		0 2 4 6 8 10 12 14 16 18 20 22 24 26 28 30 32	TRAUB TB30-42-60	Hor.-Vert
V421.701	180°		0 2 4 6 8 10 12 14 16 18 20 22 24 26 28 30 32		
V421.701	220°		0 2 4 6 8 10 12 14 16 18 20 22 24 26 28 30 32		

Bestell-Nr. order-no.	Winkel angle	Hub - stroke	D = 90 d = 45 S = 10	Maschine machine	Schlitten - slide
V422.101	60°		1 2 3 4 5 6 7 8		
V422.101	90°		1 2 3 4 5 6 7 8 9 10 11 12		
V422.101	120°		2 3 4 5 6 7 8 9 10 11 12 13 14 15	TRAUB A15-20-25	Vert.
V422.101	150°		2 3 4 5 6 7 8 9 10 11 12 13 14 15		
V422.101	180°		2 3 4 5 6 7 8 9 10 11 12 13 14 15 16		
V422.101	220°		2 3 4 5 6 7 8 9 10 11 12 13 14 15 16		
V422.101	240°		4 5 6 7 8 9 10 11 12 13 14 15 16		
V422.101	260°		4 6 8 10 12 14 16		

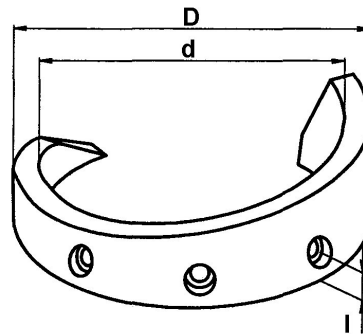
Bestell-Nr. order-no.	Winkel angle	Hub - stroke	D = 80 d = 46 S = 10	Maschine machine	Schlitten - slide
V422.201	60°		1 2 3 4 5 6 7 8 10		
V422.201	90°		1 2 3 4 5 6 7 8 10 11 12		
V422.201	120°		1 2 3 4 5 6 7 8 10 11 12	SAIC B26-30	Vert.
V422.201	150°		1 2 3 4 5 6 7 8 10 11 12	ITS 26	Vert.
V422.201	180°		2 3 4 5 6 7 8 9 10 11 12 13 14		
V422.201	220°		2 3 4 5 6 7 8 9 10 11 12 13 14 15 16		

13

Bestell-Nr. order-no.	Winkel angle	Hub - stroke	D = 118 d = 58 S = 12	Maschine machine	Schlitten - slide
V422.601	90°		2 4 6 8		
V422.601	120°		2 4 6 8 10		
V422.601	150°		2 4 6 8 10 12 14 16 18 20 22 24	TRAUB A36-42-60	Vert.
V422.601	180°		2 4 6 8 10 12 14 16 18 20 22 24 26		
V422.601	220°		2 4 6 8 10 12 14 16 18 20 22 24 26		

Glockenkurven gehärtet, für Langdreheinrichtung

Cam Tubes Hardened, for Lathes

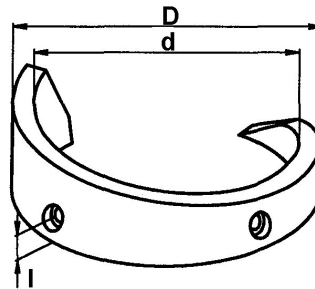


Bestell-Nr. order-no.	Winkel angle	Hub - stroke	D = 80 d = 60 l = 10	Maschine machine
V430.101	180°	10 15 20 25 30 35 40 50		TRAUB A 15-20-25
V430.101	220°	10 15 20 25 30 35 40 50 60		CASAR TA26-30
V430.101	240°	20 30 40 50 60		SAIC E26-30 A26-30-32 GIORGI 20-25-30-32/ ITS 26

Bestell-Nr. order-no.	Winkel angle	Hub - stroke	D = 115 d = 95 l = 15	Maschine machine
V430.601	180°	10 20 30 40 50 60		TRAUB A26-36-42-60
V430.601	220°	10 20 30 40 50 60 70		
V430.601	240°	40 60 80		

**Glockenkurven gehärtet,
für Gewindeschneidapparat**

**Cam Tubes Hardened,
for Tapping Equipment**



Bestell-Nr. order-no.	Winkel angle	Hub - stroke	D = 115 d = 95 l = 15	Maschine machine
V431.101	100°	5 8 10 12 15 18 20 23 25 30 35		TRAUB A15-20-25
V431.101	120°	5 8 10 12 15 18 20 23 25 30 35 40		

		D = 104 d = 80 l = 11		
V431.201	90°	6 8 10 12 15 18 20 23 25 30		GIORGI 20-25-30-32
V431.201	120°	6 8 10 12 15 18 20 23 25 30 35		

		D = 108 d = 84 l = 11		
V431.202	100°	5 8 10 12 15 18 20 22 25 28 30 35		SAIC B26-30 A26-30-32
V431.202	120°	5 8 10 12 15 18 20 22 25 28 30 35		ITS 26 (Alter Typ)

		D = 108 d = 88 l = 15		
V431.203	100°	10 12 15 18 20 22 25 28 30 35		ITS 26 (Neuer Typ)
V431.203	120°	10 12 15 18 20 22 25 28 30 35		

13.2 - 6

Kurven, Kurvenscheiben Cam Disks

13

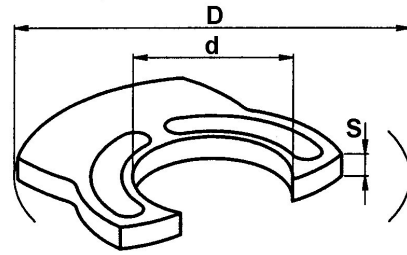
Allgemeines Zubehör für CNC- und kurvengesteuerte Drehautomaten
General Specific Parts for CNC- and Cam-Controlled Lathes

BRITSCH
Spannzeuge GmbH

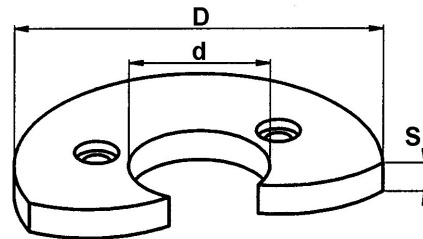
**Glockenkurven gehärtet,
für Vorschub Gewindeschneidapparat**

**Cam Tubes Hardened,
for Feed Tapping Equipment**

Bestell-Nr. order-no.	D	d	S	Maschine machine
V425.101 A	90	36	5	TRAUB A 15-20-25
V425.101 B	90	36	5	



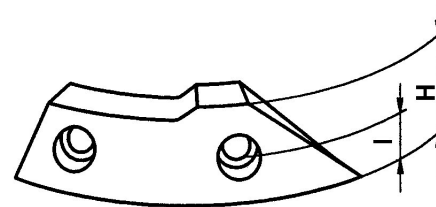
Bestell-Nr. order-no.	Winkel angle	Hub stroke	D	d	S	Maschine machine
V425.201	120°	0	88	30	10	SAIC B26-30
V425.201	150°					
V425.201	180°					
V425.201	220°		106	30	12	ITS 26
V425.204	120°					
V425.204	150°					
V425.204	180°					
V425.204	220°					



**Glockenkurven gehärtet,
für Vorschub Gewindeschneidapparat**

**Cam Disks Hardened
for Feed Tapping Equipment**

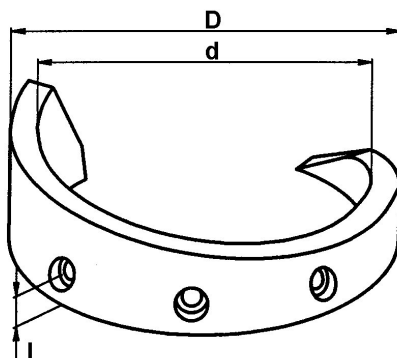
Bestell-Nr. order-no.	Winkel angle	H	D	d	l	Maschine machine
V432.101	40°	30	115	95	15	TRAUB A15-20-25
V432.101	50°					
V432.101	60°					
V432.101	70°					
V432.101	80°					
V432.101	100°					
V432.201	40°	24	104	80	11	GIORGI 20-25- 30-32
V432.201	50°					
V432.201	60°					
V432.201	70°					
V432.201	100°					
V432.202	40°	30	108	84	11	SAIC B 26-30 SAIC A 26-30-32
V432.202	50°					
V432.202	60°					
V432.202	70°					
V432.202	80°					
V432.202	100°					
V432.203	40°	30	108	88	15	ITS26
V432.203	50°					
V432.203	60°					
V432.203	80°					
V432.203	80°					



13

Glockenkurven gehärtet,
für Bohrreitstock

Cam Disks Hardened,
for Bore Tailstock Equipment



Bestell-Nr. order-no.	Winkel angle	Hub - stroke	D = 115 d = 95 I = 15	Maschine machine
V433.101	150°	0 5 8 10 12 15 18 20 23 25 28 30 35 40		TRAUB A 15-20-25
V433.101	180°	0 5 8 10 12 15 18 20 23 25 28 30 35 40 45 50 55 60		
V433.101	200°	0 5 10 15 20 25 30 35 40 45 50 60		
V433.101	220°	0 5 8 10 12 15 18 20 23 25 28 30 35 40 45 50 55 60 65 70		

Bestell-Nr. order-no.	Winkel angle	Hub - stroke	D = 108 d = 88 I = 15	Maschine machine
V433.201	150°	0 5 8 10 12 15 18 20 23 25 28 30 35 40		GIORGI 20-25-30-32 SAIC A26-30-32 B26-30 ITS 26
V433.201	180°	0 5 8 10 12 15 18 20 23 25 28 30 35 40 45 50		
V433.201	220°	0 5 8 10 12 15 18 20 23 25 28 30 35 40 45 50 55 60 65		

Bestell-Nr. order-no.	Winkel angle	Hub - stroke	D = 150 d = 125 I = 20	Maschine machine
V433.601	150°	0 5 10 15 20 25 30		TRAUB A26-36-42-60 TRAUB TB30-42-60 ITS36-42-60 SAIC B45
V433.601	180°	0 10 15 20 25 30 35 40 45 50 55 60		
V433.601	200°	20 25 30 35 40 45 50 55 60		
V433.601	220°	10 15 20 25 30 35 40 45 50		
V433.601	220°	55 60 65 70 75 80 85 90		

13.2 - 8

Kurven, Kurvenscheiben Cam Disks

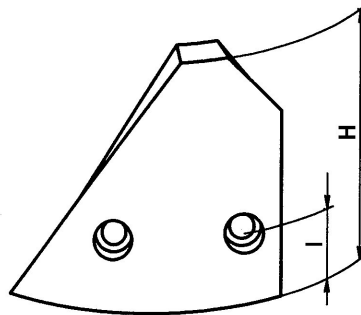
13

Allgemeines Zubehör für CNC- und kurvigesteuerte Drehautomaten
General Specific Parts for CNC- and Cam-Controlled Lathes

BRITSCH
Spannzeuge GmbH

Rückzugskurven gehärtet,
für Bohrreitstock / Langdreheinrichtung

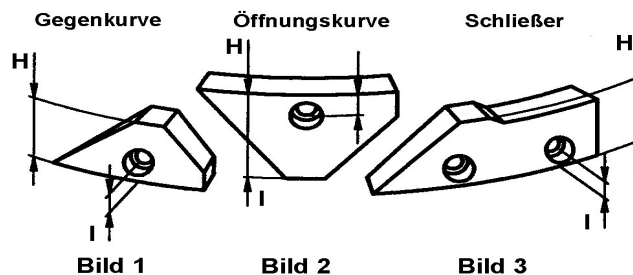
Cam Tubes for Return Hardened,
for Bore Tailstock and Lathe Equipment



Bestell-Nr. order-no.	Winkel angle	H	I	Für Bestell-Nr. for order-no.	Funktion	Maschine machine
V437.101	60°	70	20	V433.101	Bohrreitstock	TRAUB A15-20-25
V437.103	50°	49	10	V430.101	Langdreheinrichtung	TRAUB - SAIC - ITS - GIORGI - CASAR 25
V437.104	90°	112	20	V433.103	Bohrreitstock	TRAUB TD 16-26-36
V437.201	56°	62	20	V433.201	Bohrreitstock	SAIC - ITS - GIORGI 20-25-30-32
V437.601	90°	125	20	V433.601	Bohrreitstock	TRAUB - SAIC - ITS - 36-42-60
V437.602	90°	125	20	V430.205	Langdreheinrichtung	ITS 36-42-60

Kurven gehärtet,
für Zangenspanneinrichtung

Cam Tubes Hardened,
for Open-Close Collet equipment



Bestell-Nr. order-no.	Bild	H	I	Maschine machine
V439.101	1	24		
V439.102	2	32	11	TRAUB - SAIC - ITS - GIORGI - 15-20-25-26-30-32
V439.103	3	29		
V439.601	1	32		
V439.602	2	35	12,5	TRAUB A 36-42-60
V439.603	3	39		
V439.701	1	42,5		
V439.702	2	49	12,5	TRAUB TB 30-42-60
V439.703	3	47		

13

Kurven für diverse Maschinen

Cam Tubes and Disks for Different Machines

Nur auf Nachfrage

only on request

Bestell-Nr. order-no.	D	d	S	Schlitten - slide	Maschine machine	Bild
V418.240	240	40	10	Revolver - <i>revolver</i>	ATA 40	10
V417.150	150	40	10	Hor. - <i>horizontal</i>	ATA 40	4
V433.203	99	78	10		CASER TA26-30	6
V433.243	115	90	16		CASER TA45-50	6
V418.240	240	40	10	Revolver - <i>revolver</i>	DAR 46	10
V417.180	180	40	10	Hor.-Vert. - <i>hor.-vert.</i>	DAR 46	4
V433.220	100	81	-		FEINLER 10 -15	8
V422.202	96	44	10	Vert. - <i>vertical</i>	GIORGI 20-25-32	1
V418.120	120	30	6	Revolver - <i>revolver</i>	INDEX DG12	10
V418.090	90	30	6	Hor.-Vert. - <i>hor.-vert.</i>	INDEX DG12	4
V418.166	166	32	8	Revolver - <i>revolver</i>	INDEX 12-18-25	10
V417.125	124	42	8	Vert. - <i>vertical</i>	INDEX 12-18-25	4
V417.125B	124	32	8	Hor. - <i>horizontal</i>	INDEX 12-18-25	4
V418.220	220	32	8	Revolver - <i>revolver</i>	INDEX C 19-29	10
V417.140	140	36	8	Hor.-Vert. - <i>hor.-vert.</i>	INDEX C 19-29	4
V418.240	240	40	10	Revolver - <i>revolver</i>	INDEX 24-36-52	10
V418.240	240	40	10	Revolver - <i>revolver</i>	INDEX B42-60	10
V417.150	150	50	10	Vert. - <i>vertical</i>	INDEX 24-36-52	4
V417.150B	150	40	10	Hor. - <i>horizontal</i>	INDEX 24-36-52	4
V417.150B	150	40	10	Hor. - <i>horizontal</i>	INDEX B42-60	4
V422.205	110	45	12	Vert. - <i>vertical</i>	ITS 36	1
V418.240	240	40	10	Revolver - <i>revolver</i>	LOGOS 42-52	10
V417.150	150	40	10	Hor. - <i>horizontal</i>	LOGOS 42-52	4
V422.801	123	64	12	Vert. - <i>vertical</i>	SAIC B45	1
V421.805	115	48	12	Hor. - <i>horizontal</i>	SAIC 50	1
V433.809	139	115	13		SAIC 50	5
V417.125C	125	28	8	Vert. - <i>vertical</i>	STROHM 75-125	3
V419.180	180	20	8		STROHM 75-125	11
V417.125D	125	20	8		STROHM 75-125	3
V419.260	260	26	10		STROHM 205-255	11
V417.175B	175	26	10		STROHM 205-255	3
V417.175	175	35	10	Vert. - <i>vertical</i>	STROHM 205-255	3
V418.240	240	40	10	Revolver - <i>revolver</i>	TAREX 42-52	10
V417.150	150	40	10	Hor. - <i>horizontal</i>	TAREX 42-52	4
V421.103	130	40	8	Vert.-Hor. - <i>hor.-vert.</i>	TRAUB TD16-26-36	2
V433.103	130	110	12,5		TRAUB TD16-26-36	5
V434.130	130	110	12,5	Revolver - <i>revolver</i>	TRAUB TD16-26-36	7
V435.090	90	70	-		TRAUB TD16-26-36	9
V434.115	115	95	15	Revolver - <i>revolver</i>	TRAUB A25	7
V434.150	150	125	20	Revolver - <i>revolver</i>	TRAUB TB30-42-60	7
V435.120	120	95	-		TRAUB TB30-42-60	9

Bild 1



Bild 2



Bild 3

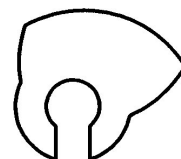


Bild 4



Bild 5



Bild 6

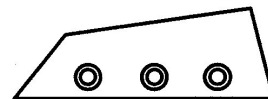


Bild 8



Bild 10

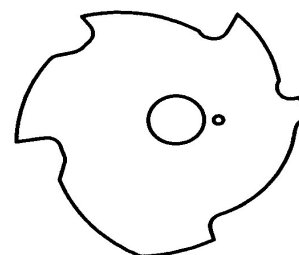


Bild 11

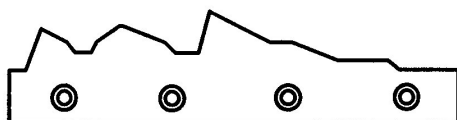
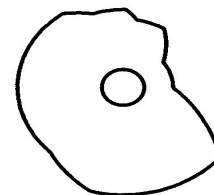


Bild 7



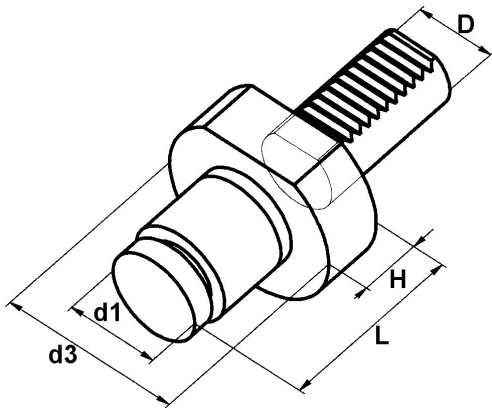
Bild 9

Seite
Page

- 1 Stoppanschlage mit VDI-Schaft
VDI Bar Stops, Fixed
- 2 -6 Werkstoffanschlage, mitlaufend
Revolving Bar Stops
- 6 Kopfe mit Gewindestange fur Werkstoffanschlage
Heads with Thread Bar for Bar Stops
- 7 Werkstoffanschlage m. Wechseleinsatzen
Revolving Bar Stops with Interchangeable Disks
- 8 Aufsatze fur Werkstoffanschlage STUP
Interchangeable Disks for Revolving Bar Stops STUP

VDI-Stoppanschlagshalter, gedämpft

VDI Bar Stops, Damped

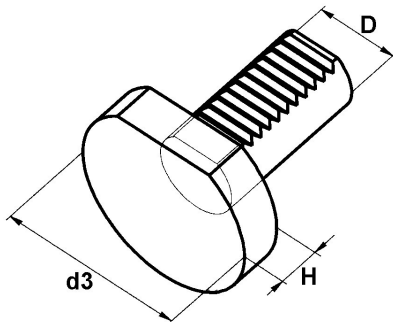


Bestell-Nr. order-no.	D	d1	d3	L	H
C-9 S3.20.35	20	35	50	58	16
C-9 S3.20.56	20	56	50	58	16
C-9 S3.30.35	30	35	68	70	20
C-9 S3.30.56	30	56	68	70	20
C-9 S3.40.40	40	44	83	78	22
C-9 S3.40.60	40	60	83	78	22

Kompressionslänge 3 mm
Length of compression

VDI-Stoppanschlagshalter

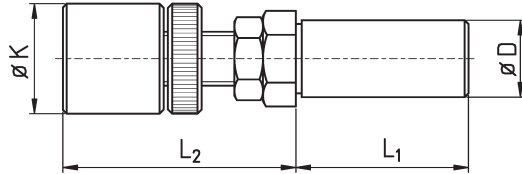
VDI Bar Stops, Fixed



Bestell-Nr. order-no.	D	d3	H
C-9 Z2.16.00	16	40	13
C-9 Z2.20.00	20	50	16
C-9 Z2.25.00	25	58	16
C-9 Z2.30.00	30	68	16
C-9 Z2.40.00	40	83	20
C-9 Z2.50.00	50	98	20
C-9 Z2.60.00	60	123	20

Werkstoffanschläge, mitlaufend

Revolving Bar Stops

Längenverstellbar
Mit 2 stabilen Wälzlagern (axial - radial) gelagertAdjustable length
With 2 solid ball bearings (axial - radial)

Schlanke Ausführung (Gewindestange M12) - slim version (thread bar M12)

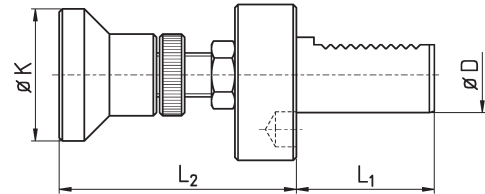
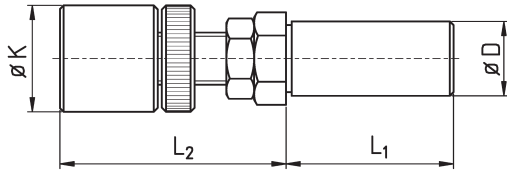
Bestell-Nr. order-no.	K	D	L ₁	L ₂	Gewindestange thread bar	Alte Bestell / INDEX-Nr. old order / INDEX-no.
STK225839-K	22	5/8"	39	46 - 79	M12	U150-58
STK221646-K	22	16	46	39 - 79	M12	U150-16
STK221941-K	22	3/4"	41	41 - 79	M12	U150-10 = W12.040.00
STK221932-KTraub	22	3/4"	32	57 - 79	M12	
STK22V2040-K	22	V20	40	46 - 79	M12	
STK222041-K	22	20	41	41 - 79	M12	U150-11
STK235839-K	23	5/8"	39	46 - 79	M12	
STK231646-K	23	16	46	39 - 79	M12	
STK231941-K	23	3/4"	41	41 - 79	M12	
STK231932-KTraub	23	3/4"	32	57 - 79	M12	
STK23V2040-K	23	V20	40	46 - 79	M12	
STK232041-K	23	20	41	41 - 79	M12	
STK265839-K	26	5/8"	39	46 - 79	M12	
STK261646-K	26	16	46	39 - 79	M12	
STK261941-K	26	3/4"	41	41 - 79	M12	U155-10 = W12.041.00
STK261932-KTraub	26	3/4"	32	57 - 79	M12	
STK26V2040-K	26	V20	40	46 - 79	M12	
STK262041-K	26	20	41	41 - 79	M12	U155-11

Werkstoffanschläge, mitlaufend

Revolving Bar Stops

Längenverstellbar
Mit 2 stabilen Wälzlagern (axial - radial) gelagert

*Adjustable length
With 2 solid ball bearings (axial - radial)*



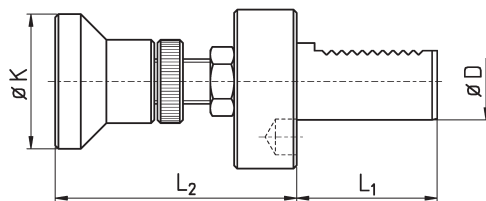
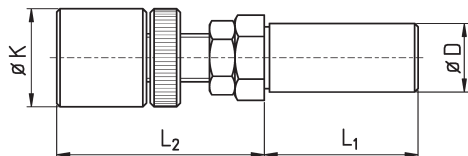
Ausführung mit VDI-Schaft - *Version with VDI-shank*

Standard Ausführung (Gewindestange M14) - standard version (thread bar M14)

Bestell-Nr. order-no.	K	D	L ₁	L ₂	Gewindestange thread bar	Alte Bestell / INDEX-Nr. old order / INDEX-no.
STM221932-KTraub	22	3/4"	32	59 - 79	M14	
STM221932-MTraub	22	3/4"	32	59 - 99	M14	
STM221932-LTraub	22	3/4"	32	59 - 119	M14	
STM221939-K	22	3/4"	39	45 - 79	M14	
STM221939-M	22	3/4"	39	45 - 99	M14	U150-10b
STM221939-L	22	3/4"	39	45 - 119	M14	
STM222041-K	22	20	41	43 - 79	M14	
STM222041-M	22	20	41	43 - 99	M14	U150-11b
STM222041-L	22	20	41	43 - 119	M14	
STM222546-K	22	25	46	43 - 79	M14	
STM222546-M	22	25	46	43 - 99	M14	
STM222546-L	22	25	46	43 - 119	M14	
STM22V2548-K	22	VDI 25	48	57 - 79	M14	
STM22V2548-M	22	VDI 25	48	57 - 99	M14	
STM22V2548-L	22	VDI 25	48	57 - 119	M14	
STM222646-K	22	1"	46	43 - 79	M14	
STM222646-M	22	1"	46	43 - 99	M14	
STM222646-L	22	1"	46	43 - 119	M14	
STM231932-KTraub	23	3/4"	32	59 - 79	M14	
STM231932-MTraub	23	3/4"	32	59 - 99	M14	
STM231932-LTraub	23	3/4"	32	59 - 119	M14	
STM231939-K	23	3/4"	39	45 - 79	M14	
STM231939-M	23	3/4"	39	45 - 99	M14	
STM231939-L	23	3/4"	39	45 - 119	M14	
STM232041-K	23	20	41	43 - 79	M14	
STM232041-M	23	20	41	43 - 99	M14	
STM232041-L	23	20	41	43 - 119	M14	
STM232546-K	23	25	46	43 - 79	M14	
STM232546-M	23	25	46	43 - 99	M14	
STM232546-L	23	25	46	43 - 119	M14	
STM23V2548-K	23	VDI 25	48	57 - 79	M14	
STM23V2548-M	23	VDI 25	48	57 - 99	M14	
STM23V2548-L	23	VDI 25	48	57 - 119	M14	
STM232646-K	23	1"	46	43 - 79	M14	
STM232646-M	23	1"	46	43 - 99	M14	
STM232646-L	23	1"	46	43 - 119	M14	

Werkstoffanschläge, mitlaufend

Revolving Bar Stops



Ausführung mit VDI-Schaft - Version with VDI-shank

Standard Ausführung (Gewindestange M14) - standard version (thread bar M14)

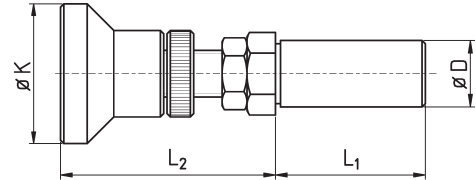
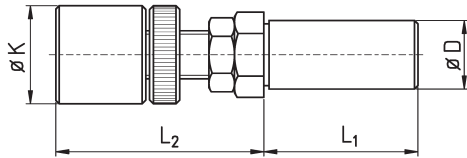
Bestell-Nr. order-no.	K	D	L ₁	L ₂	Gewindestange thread bar	Alte Bestell / INDEX-Nr. old order / INDEX-no.
STM261932-KTraub	26	3/4"	32	59 - 79	M14	
STM261932-MTraub	26	3/4"	32	59 - 99	M14	
STM261932-LTraub	26	3/4"	32	59 - 119	M14	
STM261939-K	26	3/4"	39	45 - 79	M14	
STM261939-M	26	3/4"	39	45 - 99	M14	U155-10b
STM261939-L	26	3/4"	39	45 - 119	M14	
STM262041-K	26	20	41	43 - 79	M14	
STM262041-M	26	20	41	43 - 99	M14	
STM262041-L	26	20	41	43 - 119	M14	
STM262546-K	26	25	46	43 - 79	M14	
STM262546-M	26	25	46	43 - 99	M14	
STM262546-L	26	25	46	43 - 119	M14	
STM26V2548-K	26	VDI 25	48	57 - 79	M14	
STM26V2548-M	26	VDI 25	48	57 - 99	M14	
STM26V2548-L	26	VDI 25	48	57 - 119	M14	
STM262646-K	26	1"	46	43 - 79	M14	
STM262646-M	26	1"	46	43 - 99	M14	
STM262646-L	26	1"	46	43 - 119	M14	
STM341932-Traub	34	3/4"	32	72 - 100	M14	
STM341939	34	3/4"	39	58 - 100	M14	
STM342041	34	20	41	56 - 100	M14	
STM342546	34	25	46	56 - 100	M14	U150-19
STM34V2548	34	VDI 25	48	70 - 100	M14	
STM342646	34	1"	46	56 - 100	M14	U150-20 = W32.041.00
STM391932-Traub	39	3/4"	32	72 - 100	M14	
STM391939	39	3/4"	39	58 - 100	M14	
STM392041	39	20	41	56 - 100	M14	
STM392546	39	25	46	56 - 100	M14	
STM39V2548	39	VDI 25	48	70 - 100	M14	
STM392646	39	1"	46	56 - 100	M14	U150-20S
STM431932-Traub	43	3/4"	32	72 - 100	M14	
STM431939	43	3/4"	39	58 - 100	M14	
STM432041	43	20	41	56 - 100	M14	
STM432546	43	25	46	56 - 100	M14	
STM43V2548	43	VDI 25	48	70 - 100	M14	
STM432646	43	1"	46	56 - 100	M14	U150-20T
STM561932-Traub	56	3/4"	32	72 - 100	M14	
STM561939	56	3/4"	39	58 - 100	M14	
STM562041	56	20	41	56 - 100	M14	
STM562546	56	25	46	56 - 100	M14	
STM56V2548	56	VDI 25	48	70 - 100	M14	
STM562646	56	1"	46	56 - 100	M14	

Werkstoffanschläge, mitlaufend

Revolving Bar Stops

Längenverstellbar
Mit 2 stabilen Wälzlagern (axial - radial) gelagert

*Adjustable length
With 2 solid ball bearings (axial - radial)*



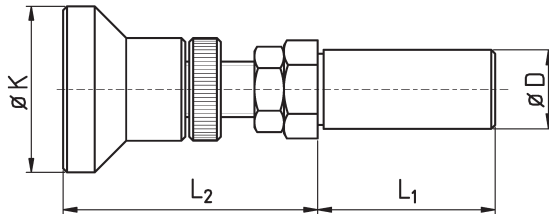
Version mit großem Kopf- \varnothing - *Version with large head*

Stabile Ausführung (Gewindestange M16) - *solid version (thread bar M16)*

Bestell-Nr. order-no.	K	D	L ₁	L ₂	Gewindestange thread bar	Alte Bestell / INDEX-Nr. old order / INDEX-no.
STG342041-K	34	20	41	56 - 102	M16	
STG342041-L	34	20	41	56 - 139	M16	
STG342544-K	34	25	44	58 - 102	M16	
STG342544-L	34	25	44	58 - 139	M16	
STG342644-K	34	1"	44	58 - 102	M16	
STG342644-L	34	1"	44	58 - 139	M16	
STG343160-K	34	1 1/4"	60	60 - 102	M16	U150-30
STG343160-L	34	1 1/4"	60	60 - 139	M16	
STG343260-K	34	32	60	60 - 102	M16	U150-31
STG343260-L	34	32	60	60 - 139	M16	
STG344065-K	34	40	65	65 - 102	M16	U150-40
STG344065-L	34	40	65	65 - 139	M16	
STG392041-K	39	20	41	56 - 102	M16	
STG392041-L	39	20	41	56 - 139	M16	
STG392544-K	39	25	44	58 - 102	M16	
STG392544-L	39	25	44	58 - 139	M16	
STG392644-K	39	1"	44	58 - 102	M16	
STG392644-L	39	1"	44	58 - 139	M16	
STG393160-K	39	1 1/4"	60	60 - 102	M16	
STG393160-L	39	1 1/4"	60	60 - 139	M16	
STG393260-K	39	32	60	60 - 102	M16	
STG393260-L	39	32	60	60 - 139	M16	
STG394065-K	39	40	65	65 - 102	M16	
STG394065-L	39	40	65	65 - 139	M16	
STG432041-K	43	20	41	56 - 102	M16	
STG432041-L	43	20	41	56 - 139	M16	
STG432544-K	43	25	44	58 - 102	M16	
STG432544-L	43	25	44	58 - 139	M16	
STG432644-K	43	1"	44	58 - 102	M16	
STG432644-L	43	1"	44	58 - 139	M16	
STG433160-K	43	1 1/4"	60	60 - 102	M16	
STG433160-L	43	1 1/4"	60	60 - 139	M16	
STG433260-K	43	32	60	60 - 102	M16	
STG433260-L	43	32	60	60 - 139	M16	
STG434065-K	43	40	65	65 - 102	M16	
STG434065-L	43	40	65	65 - 139	M16	

Werkstoffanschläge, mitlaufend

Revolving Bar Stops

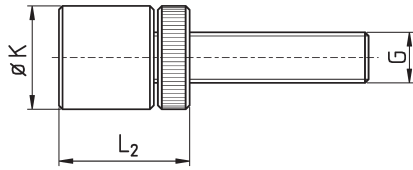
Längenverstellbar
Mit 2 stabilen Wälzlagern (axial - radial) gelagertAdjustable length
With 2 solid ball bearings (axial - radial)

Stabile Ausführung (Gewindestange M16) - solid version (thread bar M16)

Bestell-Nr. order-no.	K	D	L ₁	L ₂	Gewindestange thread bar	Alte Bestell / INDEX-Nr. old order / INDEX-no.
STG562041-K	56	20	41	56 - 102	M16	
STG562041-L	56	20	41	56 - 139	M16	
STG562544-K	56	25	44	58 - 102	M16	U155-19
STG562544-L	56	25	44	58 - 139	M16	
STG562644-K	56	1"	44	58 - 102	M16	U155-20 = W32.051.00
STG562644-L	56	1"	44	58 - 139	M16	
STG563160-K	56	1 1/4"	60	60 - 102	M16	U155-30 = W52.051.00
STG563160-L	56	1 1/4"	60	60 - 139	M16	
STG563260-K	56	32	60	60 - 102	M16	U155-31
STG563260-L	56	32	60	60 - 139	M16	
STG564065-K	56	40	65	65 - 102	M16	U155-40
STG564065-L	56	40	65	65 - 139	M16	
STG852041-K	85	20	41	56 - 102	M16	
STG852041-L	85	20	41	56 - 139	M16	
STG852544-K	85	25	44	58 - 102	M16	
STG852544-L	85	25	44	58 - 139	M16	
STG852644-K	85	1"	44	58 - 102	M16	
STG852644-L	85	1"	44	58 - 139	M16	
STG853160-K	85	1 1/4"	60	60 - 102	M16	
STG853160-L	85	1 1/4"	60	60 - 139	M16	
STG853260-K	85	32	60	60 - 102	M16	
STG853260-L	85	32	60	60 - 139	M16	
STG854065-K	85	40	65	65 - 102	M16	
STG854065-L	85	40	65	65 - 139	M16	

Köpfe mit Kontermutter und Gewindestange

Heads with Counter Nut and Thread Bar



Bestell-Nr. order-no.	Gewinde thread G	K	L ₂
STOM1022	M10	22	
STOM1023	M10	23	
STOM1026	M10	26	
STOM1222	M12	22	
STOM1223	M12	23	
STOM1226	M12	26	
STOM1422	M14	22	
STOM1423	M14	23	
STOM1426	M14	26	

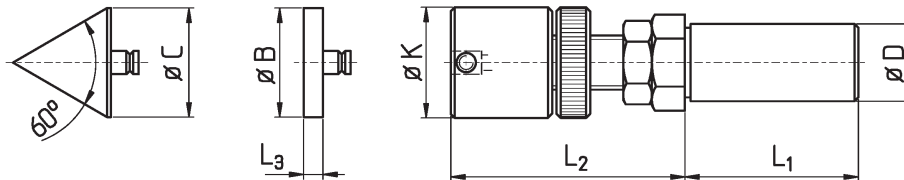
Bestell-Nr. order-no.	Gewinde thread G	K	L ₂
STOM1434	M14	34	
STOM1439	M14	39	
STOM1443	M14	43	
STOM1456	M14	56	
STOM1634	M16	34	
STOM1639	M16	39	
STOM1643	M16	43	
STOM1656	M16	56	

**Werkstoffanschlüge, mitlaufend
mit Wechseleinsätzen**

**Revolving Bar Stops
with Interchangeable Disks**

Längenverstellbar
Anschlagkopf auswechselbar (System PCM)
Mit 2 stabilen Wälzlagern (axial - radial) gelagert

*Adjustable length
Interchangeable head (system PCM)
With 2 solid ball bearings (axial - radial)*

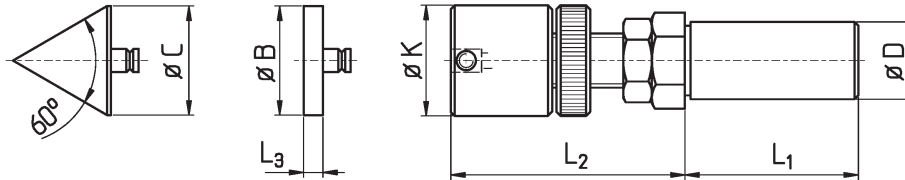


Bestell-Nr. order-no.	K	D	L ₁	L ₂	Gewindestange thread bar
STUP235839	23	5/8"	39	51 - 84	M12
STUP231646	23	16	46	44 - 84	M12
STUP231941	23	3/4"	41	46 - 84	M12
STUP231939-K	23	3/4"	39	50 - 84	M14
STUP231939-M	23	3/4"	39	50 - 104	M14
STUP231939-L	23	3/4"	39	50 - 124	M14
STUP23V2040	23	V20	40	51 - 84	M12
STUP232041-K	23	20	41	48 - 84	M14
STUP232041-M	23	20	41	48 - 104	M14
STUP232041-L	23	20	41	48 - 124	M14
STUP232546-K	23	25	46	48 - 84	M14
STUP232546-M	23	25	46	48 - 104	M14
STUP232546-L	23	25	46	48 - 124	M14
STUP23V2548-K	23	V25	48	62 - 84	M14
STUP23V2548-M	23	V25	48	62 - 104	M14
STUP23V2548-L	23	V25	48	62 - 124	M14
STUP232646-K	23	26	46	48 - 84	M14
STUP232646-M	23	26	46	48 - 104	M14
STUP232646-L	23	26	46	48 - 124	M14

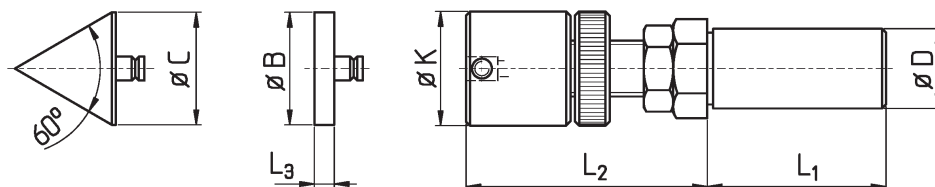
Werkstoffanschläge, mitlaufend
mit WechseleinsätzenRevolving Bar Stops
with Interchangeable Disks

Längenverstellbar
Anschlagkopf auswechselbar (System PCM)
Mit 2 stabilen Wälzlagern (axial - radial) gelagert

Adjustable length
Interchangeable head (system PCM)
With 2 solid ball bearings (axial - radial)



Bestell-Nr. order-no.	K	D	L ₁	L ₂	Gewindestange thread bar
STUP265839	26	5/8"	39	51 - 84	M12
STUP261646	26	16	46	44 - 84	M12
STUP261941	26	3/4"	41	46 - 84	M12
STUP261939-K	26	3/4"	39	50 - 84	M14
STUP261939-M	26	3/4"	39	50 - 104	M14
STUP261939-L	26	3/4"	39	50 - 124	M14
STUP26V2040	26	V20	40	51 - 84	M12
STUP262041-K	26	20	41	48 - 84	M14
STUP262041-M	26	20	41	48 - 104	M14
STUP262041-L	26	20	41	48 - 124	M14
STUP262546-K	26	25	46	48 - 84	M14
STUP262546-M	26	25	46	48 - 104	M14
STUP262546-L	26	25	46	48 - 124	M14
STUP26V2548-K	26	V25	48	62 - 84	M14
STUP26V2548-M	26	V25	48	62 - 104	M14
STUP26V2548-L	26	V25	48	62 - 124	M14
STUP262646-K	26	26	46	48 - 84	M14
STUP262646-M	26	26	46	48 - 104	M14
STUP262646-L	26	26	46	48 - 124	M14

Werkstoffanschläge, mitlaufend
mit WechseleinsätzenRevolving Bar Stops
with Interchangeable Disks

Aufsteckplatten, Zentrierspitzen

Disks, Centering Tapers

Bestell-Nr. order-no.	B	C	L ₃	
STUP150/16	16		5	Aufsteckplatte - Interchangeable disk
STUP150/25	25		5	Aufsteckplatte - Interchangeable disk
STUP155/60°		25		Zentrierspitze 60° - Centering taper 60°

Technische Informationen**Technical Informations**

Maximale Drehzahlen für mitlaufende Spitzen:

6000 U / min
r.p.m.

Rundlaufgenauigkeit:

< 0,01

Um die Lager der mitlaufenden Spitzen nicht übermäßig zu belasten, wird empfohlen, nur ca 2/3 des angegebenen Federwegs (H) auszunützen.

Eine Benutzung mit komplett komprimierter Feder kann zu einer Beschädigung der Lager führen.

Technische Informationen

Technical Informations

Maximale Drehzahlen für mitlaufende Spitzen:

Maximum rotation speed for revolving centers:

6000 U / min
r.p.m.

Rundlaufgenauigkeit:

Runout accuracy:

< 0,01

Um die Lager der mitlaufenden Spitzen nicht übermäßig zu belasten, wird empfohlen, nur ca 2/3 des angegebenen Federwegs (H) auszunützen.

To prevent a high strain of the bearings we recommend only be use 2/3 of the compensation (H).

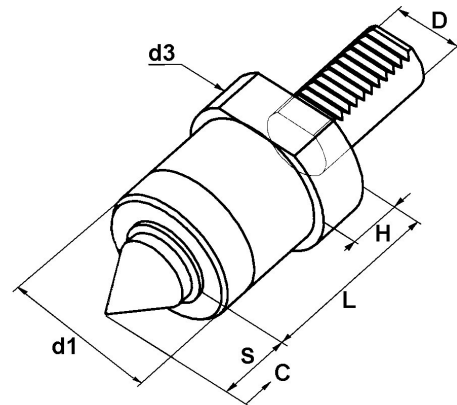
Eine Benutzung mit komplett komprimierter Feder kann zu einer Beschädigung der Lager führen.

Using with completely compressed spring could damage the bearing.

VDI-Halter für Mitlaufende Spitzen

VDI Revolving Centers

Bestell-Nr. order-no.	D	d1	d3	L	H	S	C
C-9 V3.30.78	30	58	68	78	20	34	2,5
C-9 V3.40.80	40	58	83	80	22	34	2,5

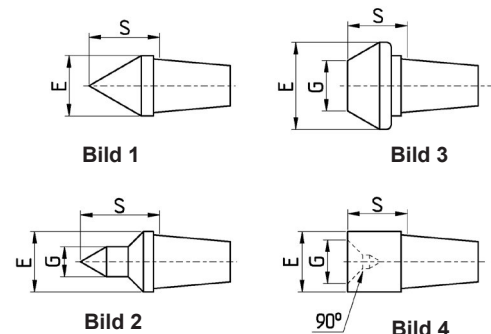


Lieferung mit Spitze V172.601
Provided with insert V172.601

Mitlaufende Spitzen für C-9 V3...

Interchangable Centers for C-9 V3...

Bestell-Nr. order-no.	Bild	E	S	G
V172.601	1	28	34	-
V172.602	2	28	40	7
V172.602B	2	28	40	12
V172.603	3	58	36	25
V172.604	4	28	32	24



13

Mitlaufende Spitzen, gefedert

Revolving Centers, Sprung

Bestell-Nr. order-no.	Bild	d	L	Spitze center
V172.208B1	1	8	35	60°
V172.210B1	1	10	35	60°
V172.212B1	1	12	35	60°
V172.214B1	1	14	35	60°
V172.215B1	1	5/8"	35	60°
V172.216B1	1	16	46	60°
V172.219B1	1	3/4"	46	60°
V172.220B1	1	20	46	60°
V172.222B1	1	22	46	60°
V172.225B1	1	25	46	60°
V172.226B1	1	1"	46	60°
V172.208B2	2	8	35	60°
V172.210B2	2	10	35	60°
V172.212B2	2	12	35	60°
V172.214B2	2	14	35	60°
V172.215B2	2	5/8"	35	60°
V172.216B2	2	16	46	60°
V172.219B2	2	3/4"	46	60°
V172.220B2	2	20	46	60°
V172.222B2	2	22	46	60°
V172.225B2	2	25	46	60°
V172.226B2	2	1"	46	60°
V172.208B3	3	8	35	60°
V172.210B3	3	10	35	60°
V172.212B3	3	12	35	60°
V172.214B3	3	14	35	60°
V172.215B3	3	5/8"	35	60°
V172.216B3	3	16	46	60°
V172.219B3	3	3/4"	46	60°
V172.220B3	3	20	46	60°
V172.222B3	3	22	46	60°
V172.225B3	3	25	46	60°
V172.226B3	3	1"	46	60°

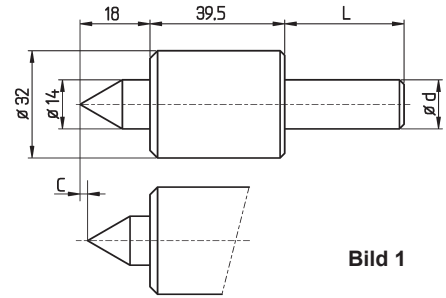


Bild 1

C = 2 mm = Andruckweg / Kompensation
Compensation

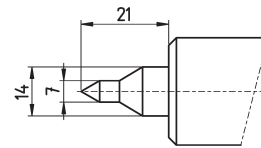


Bild 2

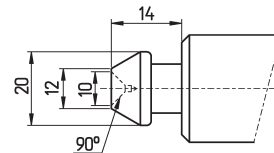
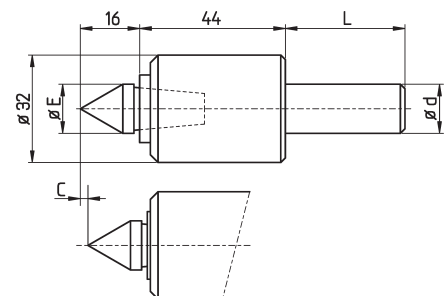


Bild 3

Mitlaufende Spitzen, gefedert

Revolving Centers, Sprung

Bestell-Nr. order-no.	d	E	L
V172.308	8	14	35
V172.310	10	14	35
V172.312	12	14	35
V172.314	14	14	35
V172.315	5/8"	14	35
V172.316	16	14	46
V172.319	3/4"	14	46
V172.320	20	14	46
V172.322	22	14	46
V172.325	25	14	46
V172.326	1"	14	46



C = 3 mm = Andruckweg / Kompensation
Compensation

Lieferung mit Spitze V172.301
Provided with insert V172.301

13.4 - 4

Mitlaufende Spitzen Revolving Centers

13

Allgemeines Zubehör für CNC- und kurvgesteuerte Drehautomaten
General Specific Parts for CNC- and Cam-Controlled Lathes

BRITSCH
Spannzeuge GmbH

Einsätze für mitlaufende Spitzen für V172.3..

Interchangeable Centers for V172.3..

Bestell-Nr. order-no.	Bild	E	S	G	F	Spitze center
V172.301	1	14	16	-	-	60°
V172.302	2	14	22	7	-	60°
V172.303	3	20	12	12	10	90°

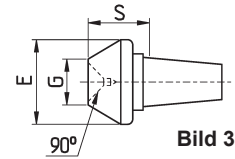
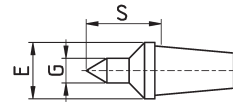
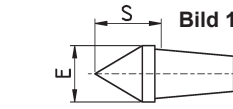


Bild 2

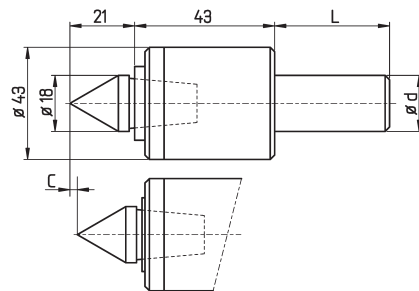
Bild 3

V172.411 Schlüssel - spanner

Mitlaufende Spitzen, gefedert

Revolving Centers, Sprung

Bestell-Nr. order-no.	d	L
V172.419	3/4"	46
V172.420	20	46
V172.422	22	46
V172.425	25	46
V172.426	1"	46
V172.430	30	46
V172.431	1 1/4"	46
V172.432	32	46
V172.400 MK2	MK2	69
V172.400 MK3	MK3	85



C = 3 mm = Andruckweg / Kompensation
Compensation

Lieferung mit Spitze V172.401
Provided with insert V172.401

Einsätze für mitlaufende Spitzen für V172.4..

Interchangeable Centers for V172.4..

Bestell-Nr. order-no.	Bild	E	S	G	Spitze center
V172.401	1	18	21	--	60°
V172.401 090	1	18	28	--	90°
V172.402	2	18	27	7	60°
V172.402B	2	18	38	9	60°
V172.403	3	30	21	14	60°
V172.404	4	26	20	20	-

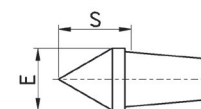


Bild 1

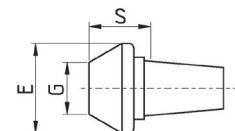


Bild 3

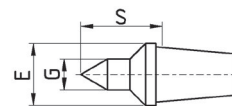


Bild 2

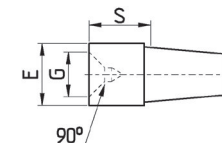


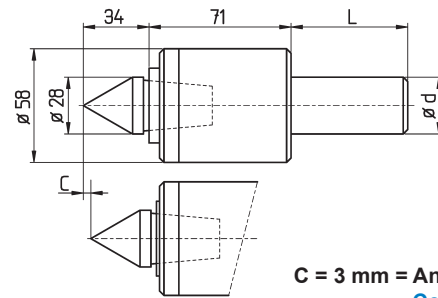
Bild 4

V172.411 Schlüssel - spanner

Mitlaufende Spitzen, gefedert

Revolving Centers, Sprung

Bestell-Nr. order-no.	d	L
V172.625	25	50
V172.626	1"	50
V172.632	32	70
V172.640	40	85
V172.600 MK3	MK2	85
V172.600 MK4	MK3	109

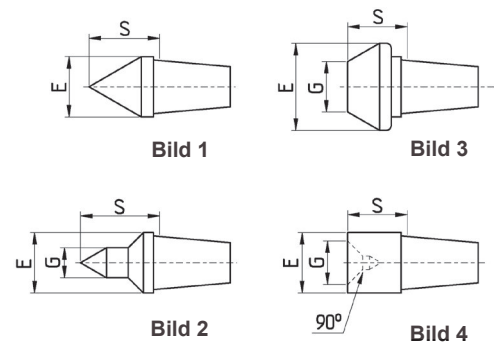


C = 3 mm = Andruckweg /
Compensation

Einsätze für mitlaufende Spitzen für V172.6..

Interchangeable Centers for V172.6..

Bestell-Nr. order-no.	Bild	E	S	G	Spitze center
V172.601	1	28	34	-	60°
V172.602	2	28	40	7	60°
V172.602B	2	28	40	12	60°
V172.603	3	58	36	25	60°
V172.604	4	28	32	24	-

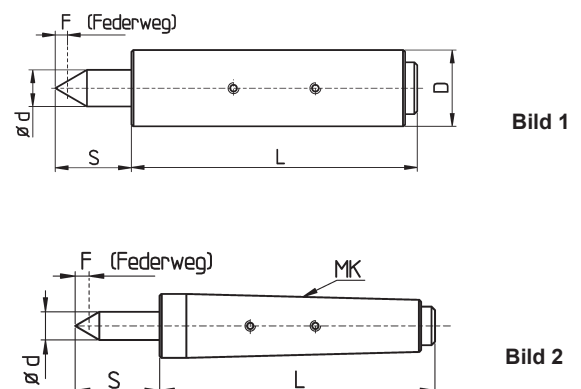


V172.411 **Schlüssel - spanner**

**Mitlaufende Spitzen, gefedert, besonders
schlanke Bauform, auswechselbare Spitzen**

**Revolving Centers, Sprung, Extra
Slim Version, Interchangeable Centers**

Bestell-Nr. order-no.	MK	D	d	F	L	S
V172.519	-	3/4"	8	2,5	79	25
V172.520	-	20	8	2,5	79	25
V172.522	-	22	8	2,5	79	25
V172.525	-	25	12	4	94	25
V172.526	-	1"	12	4	94	25
V172.528	-	28	12	4	94	25
V172.531	-	1 1/4"	18	4,7	116	35
V172.532	-	32	18	4,7	116	35
V172.502	MK2	-	8	2,5	79	25
V172.503	MK3	-	12	4	94	25
V172.504	MK4	-	18	4,7	116	35



Typ V172.5xx Rundlauf 0,003
Lieferbar in 3 verschiedenen Härten der Andruckfedern:
standard ca. 150 N, weich ca. 50 N, extra weich ca. 10 N
(je schwächer die Feder, desto schlechter der Rundlauf)
Kleinste Baumaße
Sondereinsätze auf Wunsch!

Concentric runout 0,003
Available in 3 different spring-grades:
standard ca. 150 N, soft ca. 50 N, extra soft ca. 10 N
(the weaker the spring, the worse the runout)
Smallest dimensions
Special inserts on demand

Stellschrauben f. Werkzeughalter

Adjusting Screws for Toolholders

Bestell-Nr. order-no.	d	L	D	Bild
V705.407	M4x0,7	7	9	1
V705.508	M5x0,8	8	10,5	2
V705.514	M5x0,8	14	10,5	2
V705.525	M5x0,8	25	10	1
V705.525B	M5x0,8	25	12	1
V705.625	M6x1	25	12	1
V705.626	M6x1	26	12	3
V705.630	M6x1	30	13	1
V705.630B	M6x1	30	14	1
V705.630C	M6x1	30	15	1

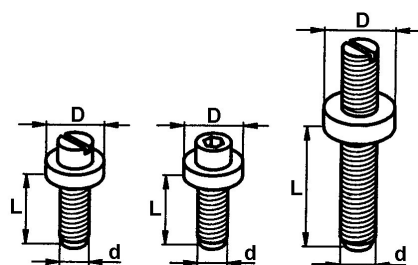


Bild 1

Bild 2

Bild 3

Klemmschrauben mit Vierkantkopf

Clamping Screws with Square Head

Bestell-Nr. order-no.	d	L	D	S	Bild
V708.515	M5	15	5	1	
V708.617	M6	17	6	1	
V708.620	M6	20	6	1	
V708.626	M6	26	6	1	
V708.636	M6	36	6	1	
V708.642	M6	42	6	1	
V708.650	M6	50	6	1	
V708.717	M7	17	6	1	
V708.721	M7	21	6	1	
V708.726	M7	26	6	1	
V708.732	M7	32	6	1	
V708.740	M7	40	6	1	
V708.750	M7	50	6	1	
V708.756	M7	56	6	1	
V708.776	M7	76	6	1	
V708.824	M8	24	6	1	
V708.830	M8	30	6	1	
V708.840	M8	40	6	1	
V708.850	M8	50	6	1	
V708.860	M8	60	6	1	
V708.880	M8	80	6	1	
V708.028	M10	28	6	1	

Bestell-Nr. order-no.	d	L	D	S	Bild
V708.038	M10	38	6	1	
V708.048	M10	48	6	1	
V708.058	M10	58	6	1	
V709.820	M8X1	20	6	1	
V709.825	M8X1	25	6	1	
V709.830	M8X1	30	6	1	
V709.835	M8X1	35	6	1	
V710.618	M6	18	10	9	2
V710.630	M6	30	10	9	2
V710.640	M6	40	10	9	2
V710.730	M7	30	10	9	2
V710.740	M7	40	10	9	2
V710.750	M7	50	10	9	2
V712.740	M7	40	12	9	2
V712.750	M7	50	12	9	2
V712.828	M8	28	12	10	2
V712.850	M8	50	12	10	2
V712.815	M8	15	14	6	2
V713.820	M8	20	14	6	2
V713.850	M8	50	14	10	2

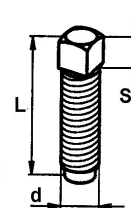


Bild 1

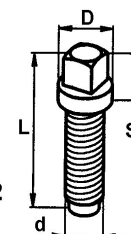
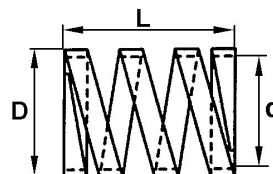


Bild 2

Druckfedern für Spannzangen
FlachdrahtSprings for Collets
Flat Wire

Bestell-Nr. order-no.	D	L _{ca}	d
DF07F 4.3-52	7	52	4,3
DF14F 11-26	14	26	11
DF15F 11.5-22	15	22	11,5
DF15F 11.5-28	15	28	11,5
DF15F 11.5-33	15	33	11,5
DF16F 13.5-32	16	32	13,5
DF16F 12.5-34	16	34	12,5
DF18F 15.5-21	18	21	15,5
DF18F 15-30	18	30	15
DF18F 16-30	18	30	16
DF20F 16-15	20	15	16
DF20F 17-25	20	25	17
DF20F 16.5-30	20	30	16,5
DF20F 15.5-35	20	35	15,5
DF20F 16.5-37	20	37	16,5
DF20F 18-45	20	45	18
DF21F 17-32	21	32	17
DF22F 18.5-22	22	22	18,5
DF22F 18.5-32	22	32	18,5
DF22F 18.5-38	22	38	18,5
DF24F 20.5-21	24	21	20,5
DF24F 20-32	24	32	20
DF25F 22-21	25	21	22
DF25F 21.5-25	25	25	21,5
DF25F 22-25	25	25	22
DF25F 22-33	25	33	22
DF25F 22-35	25	35	22
DF25F 21-40	25	40	21
DF25F 22-44	25	44	22
DF25F 22-48	25	48	22
DF25F 20.5-50	25	50	20,5
DF27F 23-25	27	25	23
DF27F 23-28	27	28	23
DF27F 23-31	27	31	23
DF27F 23-35	27	35	23
DF27F 23-40	27	40	23
DF27F 23-45	27	45	23
DF27F 24-50	27	50	24
DF28F 23-22	28	22	23
DF28F 22.5-27	28	27	22,5
DF28F 26-40	28	40	26
DF29F 25-35	29	35	25
DF30F 25-36	30	36	25
DF30F 26.5-42	30	42	26,5
DF32F 26-15	32	15	26
DF32F 26.5-21	32	21	26,5
DF32F 26-32	32	32	26
DF32F 26.5-38	32	38	26,5



D = Nennmaß, reales Maß kleiner
nominal size, real size less

d, L = ungefähre Angaben, ohne Gewähr
approximately, no guarantee

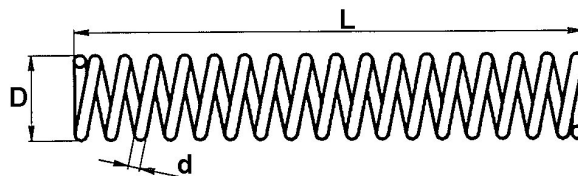
Bestell-Nr. order-no.	D	L _{ca}	d
DF34F 30-36	34	36	30
DF34F 30-42	34	42	30
DF34F 30-50	34	50	30
DF35F 30-31	35	31	30
DF35F 30-36	35	36	30
DF37F 32.5-40	37	40	32,5
DF37F 32-42	37	42	32
DF37F 34-44	37	44	34
DF37F 32-73	37	73	32
DF37F 33.5-73	37	73	33,5
DF38F 33-19	38	19	33
DF38F 33-24	38	24	33
DF38F 32-32	38	32	32
DF38F 33-52	38	52	33
DF38F 33-72	38	72	33
DF40F 36-40	40	40	36
DF40F 37.5-48	40	48	37,5
DF40F 36-50	40	50	36
DF40F 36-55	40	55	36
DF40F 36-60	40	60	36
DF40F 36.5-71	40	71	36,5
DF41F 37-60	41	60	37
DF42F 36.5-46	42	46	36,5
DF46F 42-42	46	42	42
DF47F 41.5-43	47	43	41,5
DF48F 42-32	48	32	42
DF48F 43-38	48	38	43
DF48F 44-42	48	42	44
DF48F 43-73	48	73	43
DF65F 60-88	65	88	60
DF66F 58-60	66	60	58

Tw. nur noch Restbestände, bitte anfragen

Partially remainders only, please request

Druckfedern
Runddraht

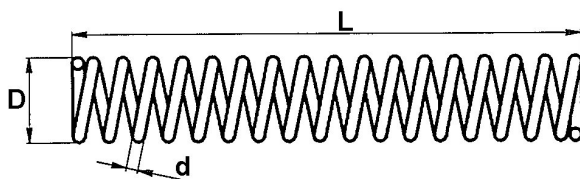
Pressure Springs
Round Wire



Bestell-Nr. order-no.	D	L	d	Für Artikel for article	Funktion function	Maschine machine
V718.017	3	14	0,4	V190.2A-192.2A -210.2A		
V718.009	4	12	0,2	V190.1-192.7-210.1	Kugelandruck - <i>pressure ball</i>	
V718.016	4	16	0,8	V190.3A-190.5A V192.3A- 92.5A- V210.3A	Doppelausgleich - <i>double adjustment</i>	
V718.019	5,5	16	0,8	V157.0/1/2/3/7	Kugelandruck - <i>pressure ball</i>	
V718.014	6	16	0,4			
V718.015	6	30	0,8	V618.101		TRAUB A15-20-25
V718.XX3	6,5	52	1,1	TRAUB Nr. 300.003 f.	Schneckenwelle - <i>worm spindle</i>	TRAUB A 15-20-25
DF07R 5.5-24	7	24	5,5			
V718.140	7	50	1	V678.100	Kupplungscheibe - <i>clutch disk</i>	TRAUB A 15-20-25
V718.790	7	100	0,8		Senkrechtschlitten - <i>vertical slide</i>	TORNOS M4 - T4
V718.007	7,4	13	0,4	V190.2- 192.2-210.2	Kugelandruck - <i>pressure ball</i>	
V718.020	7,5	27	0,5	V195.7-V195.0-V196.0		
V718.008	7,5	30	0,6	V190.1-192.7-210.1	Auszug - <i>pull out</i>	
V718.231	7,6	93	0,7			CASER 26-30
V718.012	8,5	19	0,4	V190.3-190.5-192.3 V192.5-210.3	Kugelandruck - <i>pressure ball</i>	
V718.004	8,5	60	0,7	V191.2-211.2	Auszug - <i>pull out</i>	
V718.301	9	125	1,2			STROHM 75-105-125
V718.019B	9,5	10	1	V155.0/1/2		
V718.792	9,5	110	1,1		Senkrechtschlitten - <i>vertical slide</i>	TORNOS M7 - MS7
V718.640	10	60	1,5	V678.100	Kupplungscheibe - <i>clutch disk</i>	TRAUB A 36-42-60
DF10R 7-60	10	60	7			
DF10R 6.5-135	10	135	6,5			
V718.120	10	176	1,5		Gewindeschneideinrichtung <i>tapping equipment</i>	
V718.002	10,5	48	1,6	V142.2	Rückzug - <i>retracting movement</i>	
V718.901	11,5	100	2			CASER TA26-30
V718.112	11,5	155	1,6		Waagerechtschlitten - <i>horizontal slide</i>	TRAUB TD 16-26-36
V718.006	12	36	1			
V718.005	12	52	0,8	V190.2-192.2-210.2 V180.2-80.3-200.2- V20.3	Auszug - <i>pull out</i>	
V718.003	12	60	1,8	V142.3	Rückzug - <i>retracting movement</i>	
V718.206	12,5	19	3	V512.206		SAIC B26-30
V718.210	12,5	100	1,8			GIORGI 20-25-30-32
V718.111	13	85	2	V630.101-630.201	Waagerechtschlitten - <i>horizontal slide</i>	300.005 TRAUB A15-20-25
V718.XX5	13	85	2		Traub Nr. 300.005	TRAUB A 15-20-25

Tw. nur noch Restbestände, bitte anfragen

Partially remainders only, please request

Druckfedern
RunddrahtPressure Springs
Round Wire

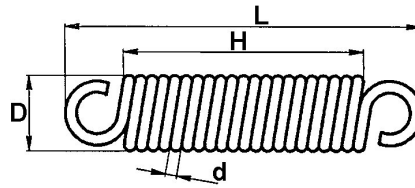
Bestell-Nr. order-no.	D	L	d	Für Artikel for article	Funktion function	Maschine machine
V718.110	13	100	2	V600.110-600.210	Senkrechtschlitten <i>vertical slide</i> 300.080	Traub A15-20-25
V718.650	13	155	2	V600.610	Senkrechtschlitten - <i>vertical slide</i>	Traub A 36-42-60
DF14R 11-26	14	26	11			
DF14R 9-86	14	86	9			
DF14R 9-101	14	101	9			
V718.610	14	120	2,2	V630.601-630.611	Waagerechtschlitten - <i>horizontal slide</i>	Traub A 36-42-60
V718.150	14	121	1,5			Traub A15.20-25
V718.709	14	227	2			
V718.711	14	327	2		Langdrehschlitten - <i>slide for lathe</i>	Traub TB 30-42-60
V718.902	14,5	100	2,5			
V718.010	15	80	1	V190.3-190.5-192.3 V192.5-V210.3	Auszug - <i>pull out</i>	
DF15R 8.5-110	15	110	8,5			
DF15R 9.5-200	15	200	9,5			
V718.710	15	215	2	V600.010	Senkrechtschlitten - <i>vertical slide</i>	Traub TD 16-26-36
V718.710	15	215	2	V600.710	Senkrecht- Waagerechtschlitten <i>vertical-horizontal slide</i>	Traub TB 30-42-60
V718.903	15,6	138	3			CASER TA45-50
DF16R 9-110	16	110	9			
DF16R 11-250	16	250	11			
V718.130	17	35	1	V674.100/200 -676.100/200		Traub A15-20-25
DF17R 11-44	17	44	11			
V718.201	17	86	2	V660.200		SAIC B26-30
V718.021	23	14	1,5	V172.2		
V718.701	36	130	2,5	V660.700	Stoppanschlag - <i>bar stop</i>	Traub TB 30-42-60

Tw. nur noch Restbestände, bitte anfragen

Partially remainders only, please request

Zugfedern

Pulling Springs



Bestell-Nr. order-no.	D	H	L	d	Für Artikel for article	Funktion function	Maschine machine
V719.101	13	32	58	1,5	V660.100 - V660.110	Stoppanschlag - <i>bar stop</i>	TRAUB A 15-20-25
V719.102	15	34	58	2	V624.100	Langdreheinrichtung - <i>slide for lathe</i>	TRAUB A 15-20-25
V719.103	10	53	73	1,5		Gewindedreheinrichtung <i>tapping equipment</i>	TRAUB A 15-20-25
V719.601	15	45	71	2	V660.600		TRAUB A 36-42-60
V719.602	16	97	129	2,2	V624.600		TRAUB A 36-42-60
V719.701	20	89	129	3	V660.700		TRAUB TB 30-42-60

Sonderfedern + Sicherungsringe

Special Springs and Rings

Bestell-Nr. order-no.	D	d	Bild	Für Artikel for article
V720.002	22	0,8	2	180.200/300 - 200.200/300
V720.101			1	V728.101
V720.110	18	1,5	2	V734.110 V734.120
V720.210	15	1,5	2	V734.210
V720.610	21	1,5	2	V734.610 V734..620
V720.710	25,5	1,5	2	V660.700



Bild 1

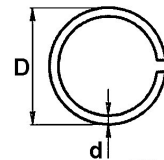


Bild 2

Kantentaster

Edge Finders

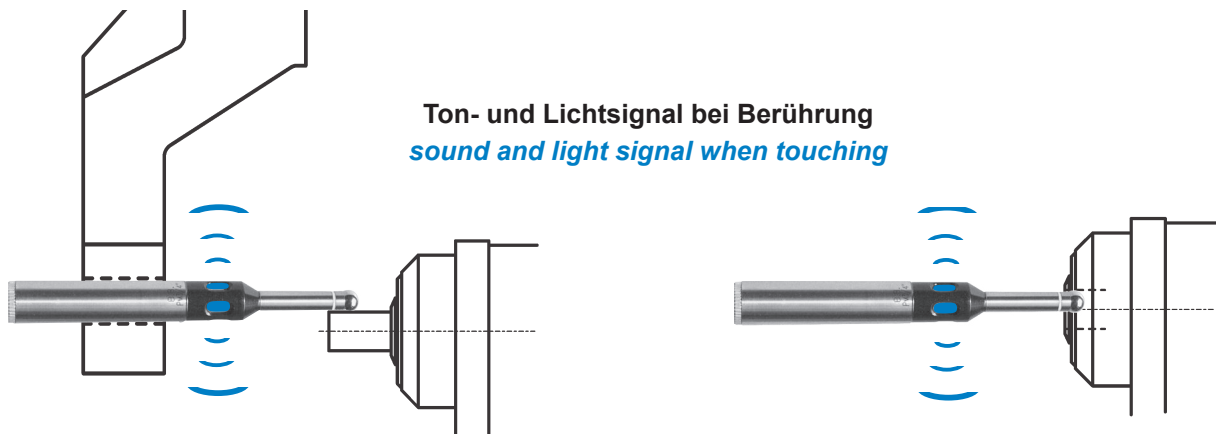
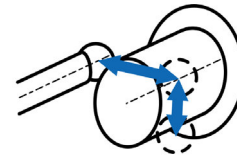
Nicht nur für Fräsmaschinen -

Not only for milling machines

Schnell und präzise einsetzbar bei allen 3-Achsen-
Drehmaschinen

(CNC-Langdreher z.B. STAR, CITIZEN)

zum Bestimmen der Werkzeug- / Materialachsen

Prinzip:
principle:3 Punkte an der Welle oder Bohrung antasten
⇒ exakte Lage der AchsenTouching 3 points on the spindle ore bore
⇒ exactly positions of the center lines

Bestell-Nr. order-no.	D	L	L ₁
KTE16	16	100	28
KTE19	3/4"	158	46
KTE20	20	158	46
KTE22	22	158	46
KTE25	25	158	46
KTE26	1"	158	46